

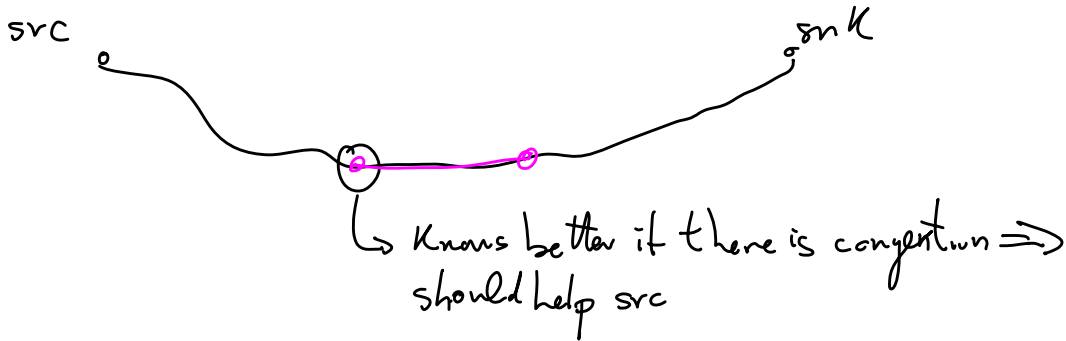
# Lecture 11

Note Title

2/4/2005

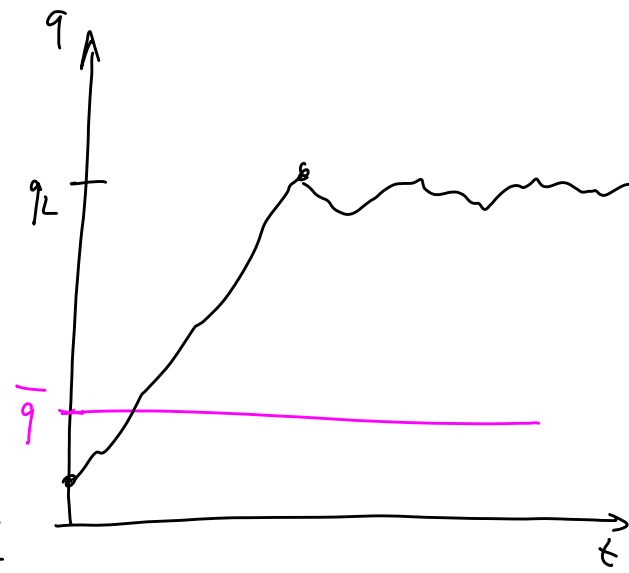
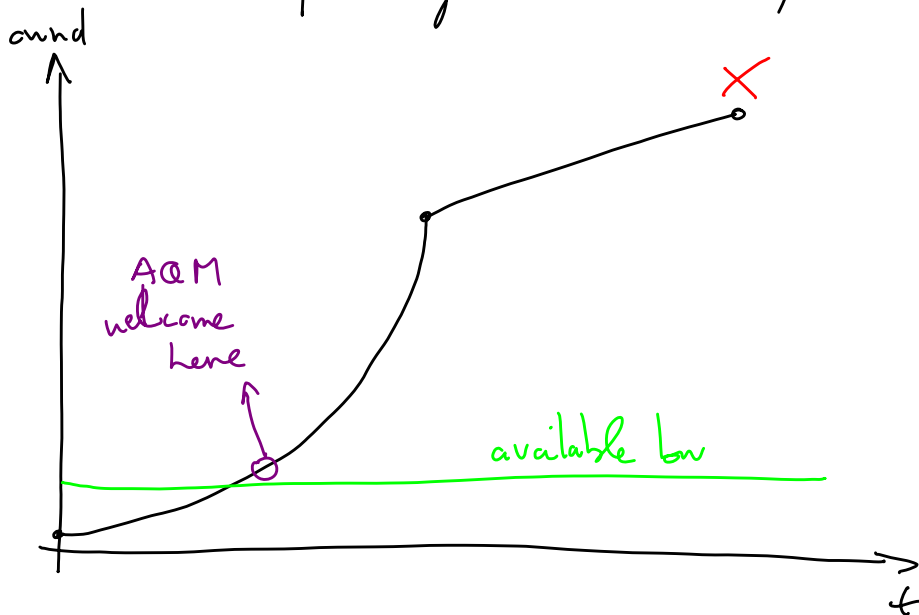
So far: assumption drop tail / FIFO queues.

AQM (Active Queue Management).



Informing the src of congestion:

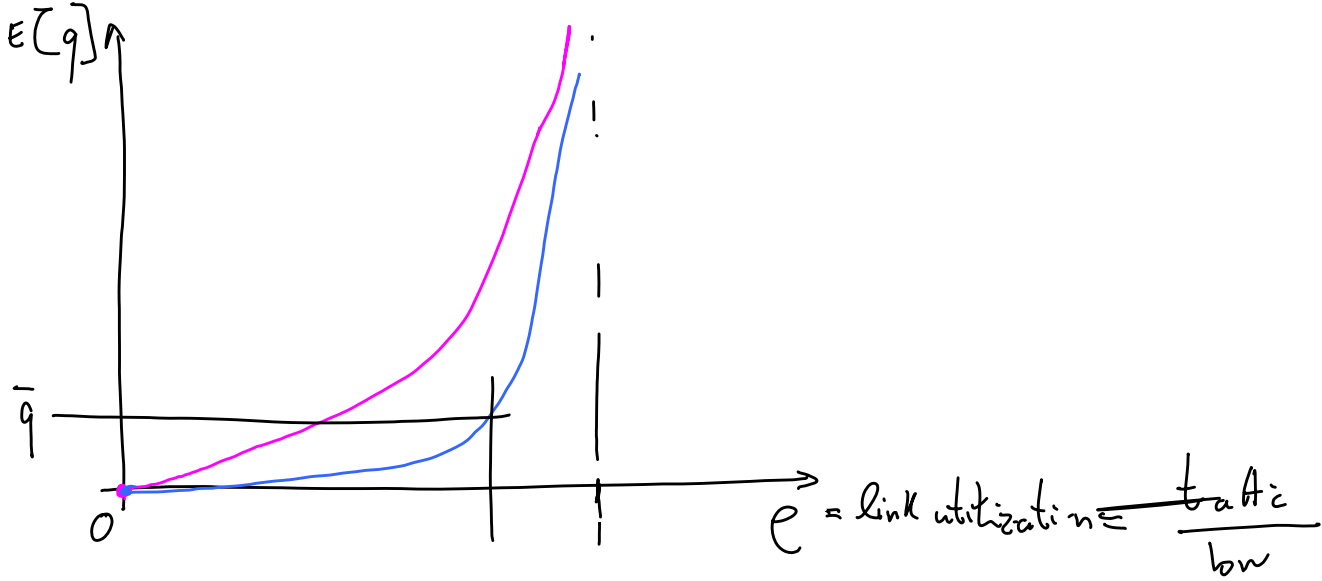
1. Drop packets (include early drop)
2. ICMP Source Quench
3. ECN (Explicit congestion notification)



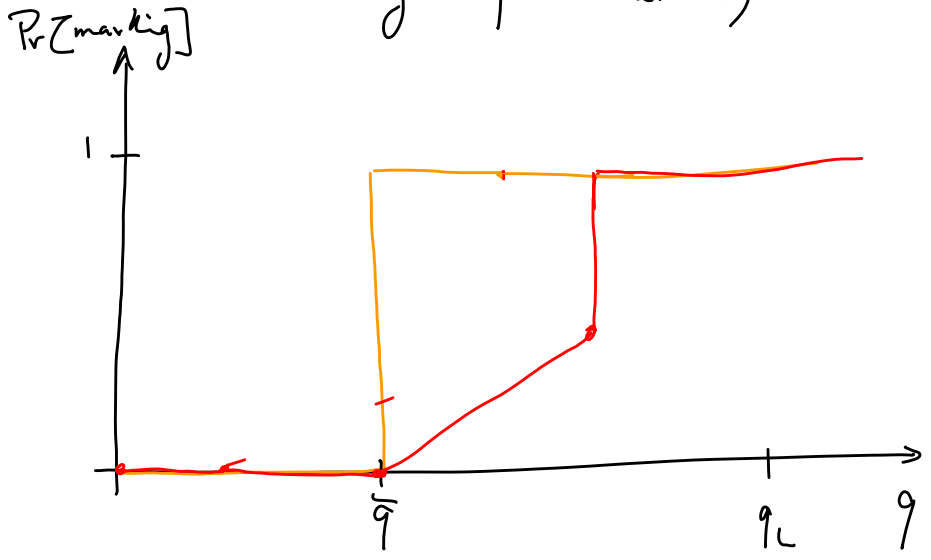
Reference queue length?  $\bar{q}$

$\bar{q} = 0$  No queuing delay, no throughput

$\bar{q} = q_L$  Poor QoS, poor throughput (eqn)



RED (Random Early Drop / Detection)



↳ exponential moving avg (low pass filter)

Parameters?