

Lecture 14

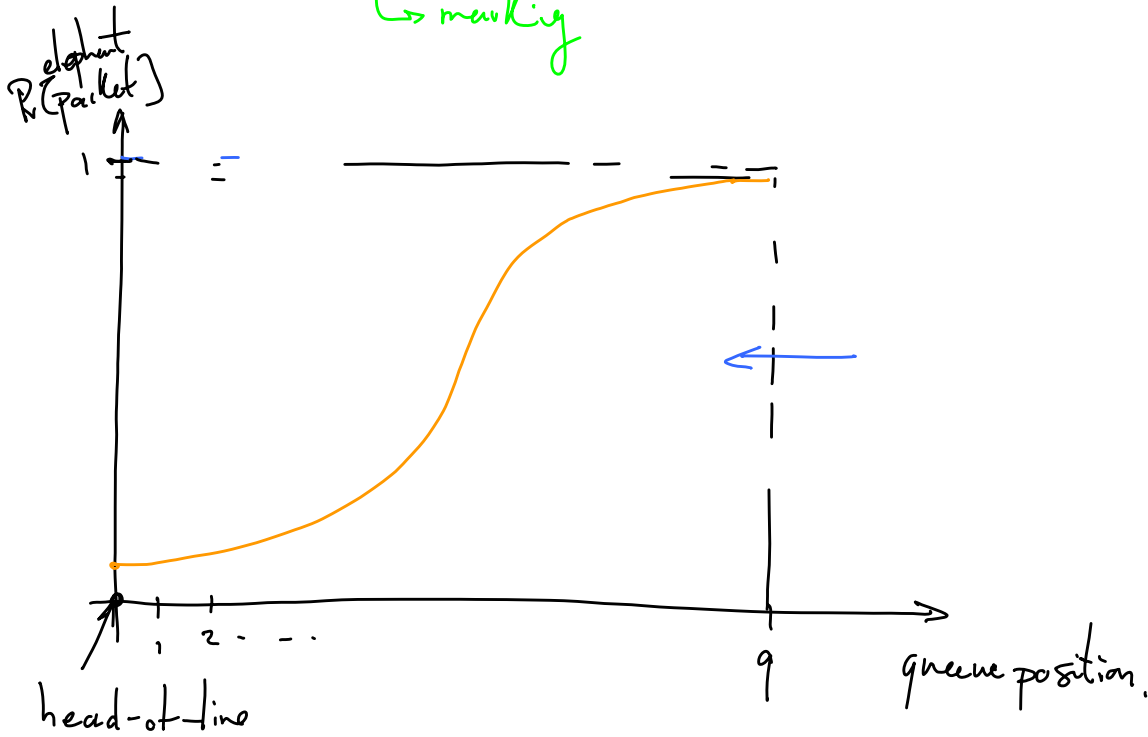
Note Title

2/13/2005

Choke

When new packet arrives, select a rnd packet already in queue.
If flows match, discard them both, else FIFO/Drop Tail.

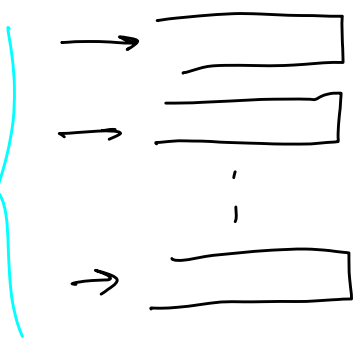
↳ marking



Fairness

FQ (Fair Queue)

WFQ



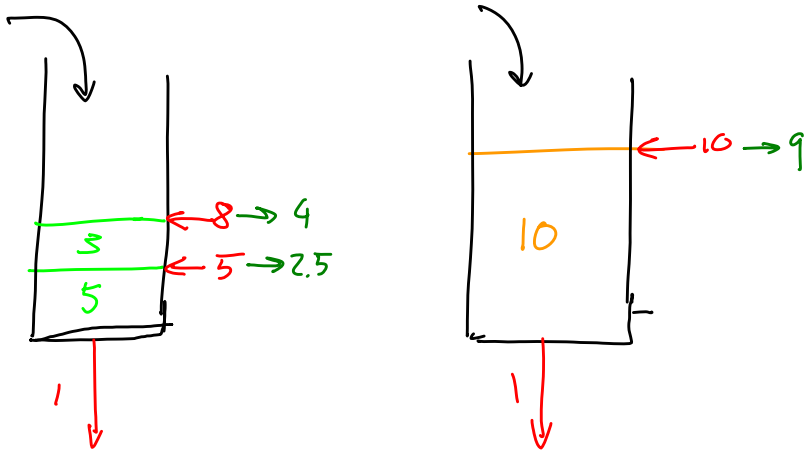
Ideally, $\frac{B}{10}$

Byte-wise FQ?

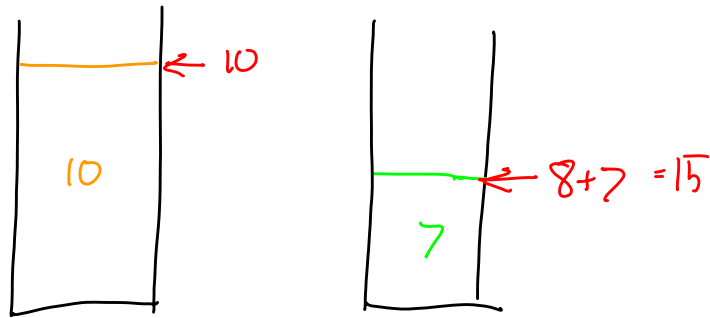
Virtual clock algorithm.

Estimate forwarding time if each queue had a totally separate link of
 $bw = B/10$.

Choose packets in non-decreasing order of forwarding time



A new flow arrives and new queue created, eg length 7 at time 3
 SCFQ (finishtime) $\rightarrow 8$



SFQ

